



## Technical Information

# R&S<sup>®</sup> ZV-WR10 / -WR12 / -WR15 Calibration Kits

This technical information describes the following calibration kits:

- ◆ R&S® ZV-WR10 (without Sliding Match standard), stock no. 1307.7100.10
- ◆ R&S® ZV-WR10 (with Sliding Match standard), stock no. 1307.7100.11
- ◆ R&S® ZV-WR12 (without Sliding Match standard), stock no. 1307.7700.10
- ◆ R&S® ZV-WR12 (with Sliding Match standard), stock no. 1307.7700.11
- ◆ R&S® ZV-WR15 (without Sliding Match standard), stock no. 1307.7500.30
- ◆ R&S® ZV-WR15 (with Sliding Match standard), stock no. 1307.7500.31

© 2008 Rohde & Schwarz GmbH & Co. KG  
81671 Munich, Germany

Printed in Germany - Subject to change - Data without tolerance limits is not binding.

R&S® is a registered trademark of Rohde & Schwarz GmbH & Co. KG.

Trade names are trademarks of the owners.

The following abbreviations are used throughout this document:

R&S® ZV-WR10 / -WR12 / -WR15 is abbreviated as R&S ZV-WR10 / -WR12 / -WR15

R&S® ZVA-Zxxx / -ZxxxE is abbreviated as R&S ZVA-Zxxx / -ZxxxE

# Safety Instructions

This calibration kit has been designed and tested in accordance with the EC Certificate of Conformity and has left the manufacturer's plant in a condition fully complying with safety standards.

**CAUTION****General safety instructions**

To maintain this condition and to ensure safe operation, you must observe all instructions and warnings given on this page.

**Mechanical protection**

The calibration kit (especially the waveguide flanges) must be protected against mechanical damage. Furthermore the waveguides must be shielded from dust. While not mounted, protect the waveguide flanges by attaching the included caps. Avoid scratching the contact surfaces of the waveguide flanges.

**Mounting a standard**

The waveguide flanges of the standards are high-precision mechanical components that can be damaged by improper handling, e.g. canting of the flanges. Use a flat stable surface for your test setup and align the flanges accurately before mounting.

**Opening the standards**

Do not disassemble the standards. This applies especially to the sliding match standard consisting of several mounted parts. Repair can only be done at the manufacturer's servicing department.

**Avoid heavy shocks**

Heavy shocks can damage inner parts of the standards. Shock-proof packing should therefore be used for storing and dispatching of the calibration kit. Use the wooden box for this purpose.

**Damage caused by cleaning agents**

Cleaning agents contain substances that may damage the standards, e.g. solvent-containing cleaning agents may damage the labeling. Never use cleaning agents such as solvents (thinners, acetone etc.), acids, bases or other substances. Protect the waveguides from any liquids.

The outside of the standards is suitably cleaned using a soft, line-free dust cloth.

**Damage level**

The damage level of the calibration kit is listed in the data sheet. Exceeding this level may damage the calibration standards.

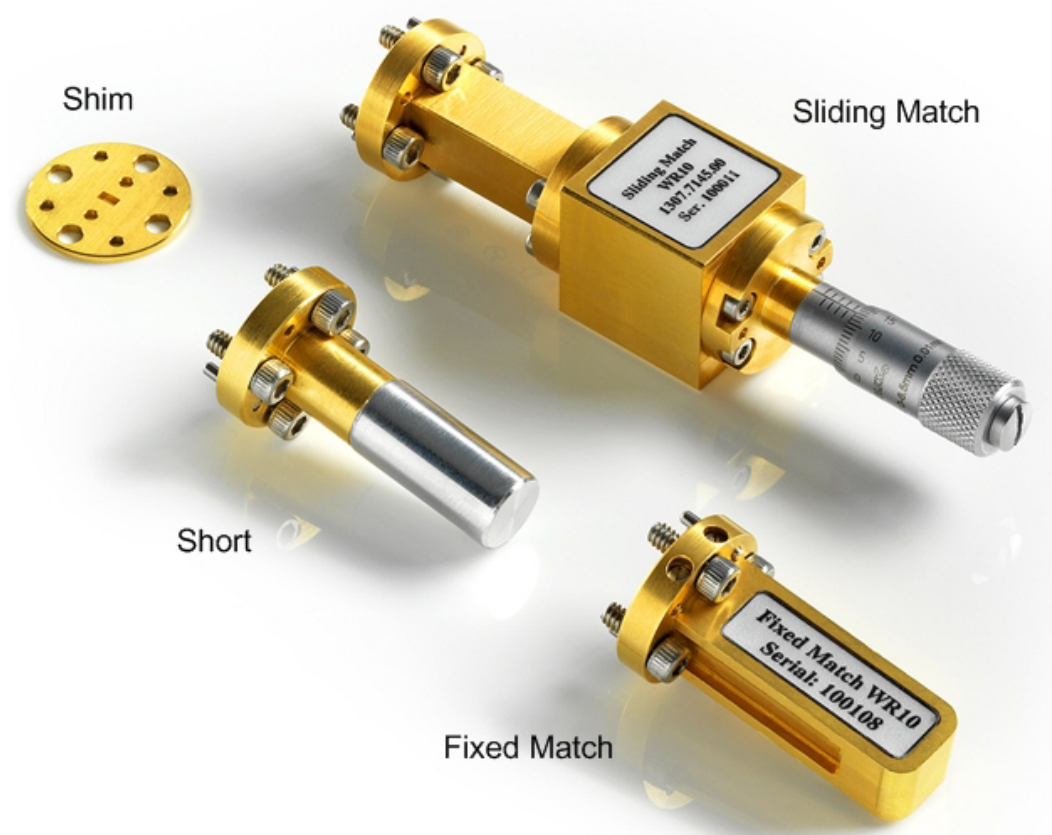
## Waveguide Calibration Kits

The waveguide calibration kits allow to calibrate network analyzers for test setups involving frequency converters.

Calibration Kit	Optimized for frequency converter type
R&S ZV-WR10	R&S ZVA-Z110 or R&S ZVA-Z110E
R&S ZV-WR12	R&S ZVA-Z90E
R&S ZV-WR15	R&S ZVA-Z75

Each calibration kit contains the following standards:

- ◆ A Short standard which also serves as a Reflect standard
- ◆ A (Fixed) Match standard
- ◆ A Shim that contains a short transmission line causing a  $\lambda/4$  phase shift around the center frequency of the converters operating range and a 180 deg phase shift of the reflection coefficient.
- ◆ A Sliding Match standard (kits 1307.7100.11, 1307.7700.11, and 1307.7500.31), providing more accurate results than the Fixed Match standard – at higher test effort.



Calibration Kit R&S ZV-WR10 (1307.7100.11)

The following table provides an overview of the available standards for rectangular waveguide calibration and the technical implementation using the calibration kit.

Standard Type	Technical Implementation
Open	Not available in waveguide technology, replaced by "Offset Short"
Short	Contained in the calibration kit
Offset Short	Short + Shim, both contained in the calibration kit
(Fixed) Match	Contained in the calibration kit
Sliding Match	Contained in the calibration kits 1307.7100.11, 1307.7700.11, and 1307.7500.31
Reflect	Short, contained in the calibration kit
Through	Direct through connection of the two waveguide flanges
Line 1	Through connection of the two waveguide flanges with Shim in-between. In view of the bandwidth of the frequency converters, Line 2 is not needed.
Attenuation	Not contained in the calibration kit
Symmetrical Network	Not contained in the calibration kit

The standards in the calibration kit allow all one-port and two-port calibration types supported by the network analyzer except TNA.

The characteristic data of the standards are very stable and independent of the individual calibration kit. It is not required to use individual data for each kit and load the data into the analyzer. Instead the data is already stored in the network analyzer (required: software option R&S ZVA-K8 and at least firmware version V2.20 for R&S ZV-WR10, V2.47 for R&S ZV-WR15, V2.70 for R&S ZV-WR12).

It is possible to export the stored data to a file. Use the "Cal-Kits" dialog of the network analyzer for this purpose: "Channel > Calibration > Cal-Kits > Export Kit ..."

## Sliding Match Standard

The sliding match standard is part of the calibration kits 1307.7100.11, 1307.7700.11, and 1307.7500.31. It is a one-port standard consisting of a precision waveguide section with a movable, low-reflection load element (sliding load). This standard is used because no perfect match is available. However, a series of measurements at a given frequency with equal mismatch and varying phase yields reflection factors that are located on a circle in the Smith chart. The center of this circle corresponds to perfect match. The network analyzer determines and further corrects this match point following I. Kása's circle-fitting algorithm.

To obtain the reflection coefficient for a perfectly matched calibration standard, the sliding load must be measured at least at three positions which should be unequally spaced to avoid overlapping data points. Increasing the number of positions to 4 – 6 can improve the accuracy. It is recommended to use the positions listed below. They are optimized for the relevant frequency range. Set the adjustable screw of the standard to the following positions:

- ◆ R&S ZV-WR10 (75 GHz to 110 GHz):  
0 mm, 0.35 mm, 0.8 mm, 1.4 mm, 2.1 mm, 4.2 mm
- ◆ R&S ZV-WR12 (60 GHz to 90 GHz):  
0 mm, 0.42 mm, 0.96 mm, 1.68 mm, 2.52 mm, 5.04 mm
- ◆ R&S ZV-WR15 (50 GHz to 75 GHz):  
0 mm, 0.52 mm, 1.2 mm, 2.1 mm, 3.15 mm, 6.3 mm

If you accidentally unscrew the knob completely, simply screw it on again.

## Performing a System Error Correction

### Notes:

- ◆ Thermal fluctuations cause linear expansion of the waveguide components and result in phase drift. An environment with a stable temperature within the range stated in the data sheet is a prerequisite for accurate measurements.
- ◆ If a power calibration is required, it must be performed previous to system error correction. Refer to the documentation of your frequency converter for instructions.
- ◆ If you readjust the output power of the frequency converter without electronic attenuator (using the knurled knob at the top of the converter) an already performed system error correction is no longer valid. For that reason adjust the output power of the frequency converter before system error correction.

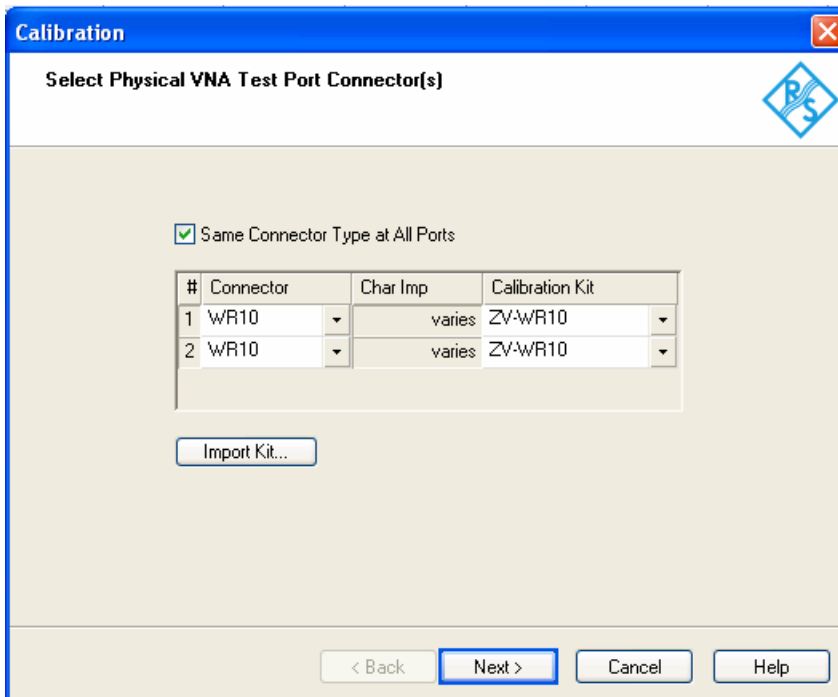
### TOSM Calibration

This example reports a TOSM calibration using the calibration kit R&S ZV-WR10. The test setup is described in the frequency converter manuals and comprises a four port R&S ZVA analyzer connected to two R&S ZVA-Z110 or R&S ZVA-Z110E converters. It is suitable for transmission and reflection measurements on two-port waveguide DUTs in the frequency range of the converters. Test setups with other frequency converters can be calibrated in a similar way using the appropriate calibration kits (see table on p. 4).

The calibration procedure using the analyzer's "Calibration Wizard" is straightforward (for details refer to the analyzer help system, section "Guided Calibration"):

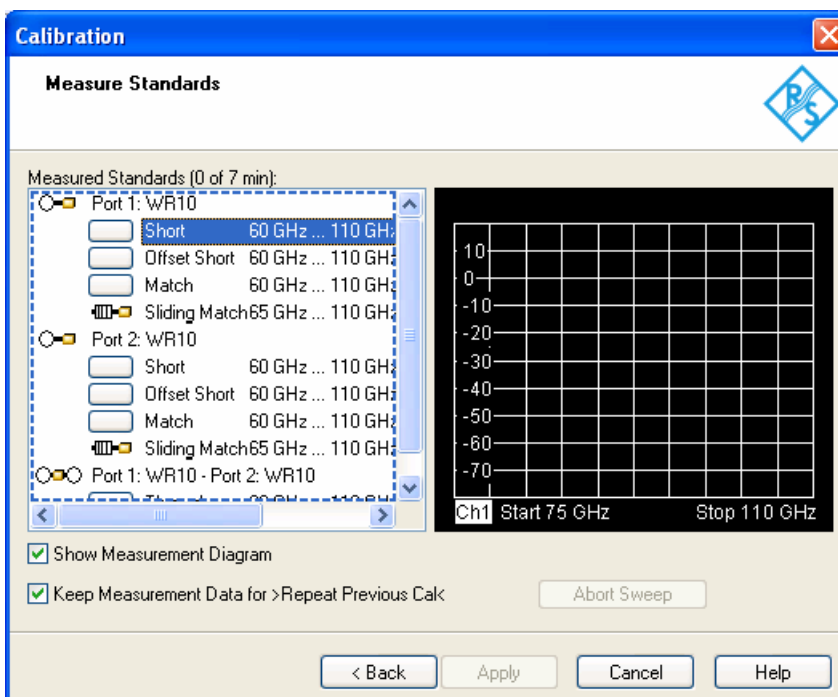
1. Activate the Frequency Converter Mode ("System" > "System Config..." > "Frequency Converter") and connect the two converters.
2. Click "Channel" > "Start Cal" > "Two Port P1 P2" > "TOSM".

The calibration kit R&S ZV-WR10 is preinstalled. It is displayed in the “Select Physical VNA Test Port Connector(s)” dialog, together with the appropriate connector type.



Selecting connector type and calibration kit for R&S ZVA-Z110

- Click “Next” to proceed to the “Measure Standards” dialog.



Starting calibration sweeps using the R&S ZV-WR10 standards

4. Connect the Short standard from the calibration kit to the frequency converter no. 1 (the converter with RF IN connected to the analyzer port no. 1) and click “Port 1: WR10” > “Short” to initiate the calibration sweep.
5. Proceed in a similar way, using the Short and the Shim in the calibration kit (producing an “Offset Short”) and the fixed Match.
6. Repeat the three one-port calibration sweeps at frequency converter no. 2 (the converter with RF IN connected to the analyzer port no. 2).
7. Connect the two waveguide flanges directly and click “Port 1: WR10 – Port 2: WR10” > “Through” to initiate the transmission calibration sweep.
8. Click “Apply” to calculate and apply the system error correction data and close the wizard.

### Tips:

You can use the sliding match instead of the fixed match in order to improve the accuracy of the system error correction; see section “Sliding Match Standard” on page 5. Both standards cover the same frequency range.

You can check the calibration by measuring a standard that was not used during the system error correction. If you use the sliding match for system error correction, you can use the fixed match to check the calibration. Note that this check is incomplete (e.g. the transmission is not verified when using a one-port standard like a fixed match).

## UOSM Calibration

UOSM calibration uses an unknown through<sup>1</sup> and yields two solutions related to different transmission phase values. The two solutions differ by 180 deg – only one solution is valid.

Within a coaxial system the analyzer selects the correct solution automatically. This is not possible in a waveguide system because the delay time is frequency-dependent (dispersive propagation). The valid solution has to be selected manually. For this purpose the following dialog opens during calculation of the system error correction data (see step 8 above):

Unknown Through Between Ports	Dispersive	Delay Time	Phase
Port 1: WR10 - Port 2: WR10	<input checked="" type="checkbox"/>		-0.1°

*Selecting the unknown through characteristics with an R&S ZV-WR10 calibration kit*

Check “Dispersive” and select the right solution from the “Phase” drop-down list.

<sup>1</sup> Any two-port network whose S-parameters fulfill the reciprocity condition  $s_{21}=s_{12}$  can be used as an unknown through (e.g. a waveguide bend).